



national targets for non-ETS emissions (in the EU) 27 April 2016

European Council October 2014

- endorsed a binding EU target of an at least 40% domestic reduction in greenhouse gas emissions by 2030 compared to 1990;
- the target will be delivered collectively by the EU in the most cost-effective manner possible, with reduction by 2030, compared to 2005:
 - in the ETS sector amounting to 43%; and
 - In the non-ETS sectors amounting to 30%;

(note there is no “at least” in front of the 43 and 30% targets)

European Council October 2014 (2)

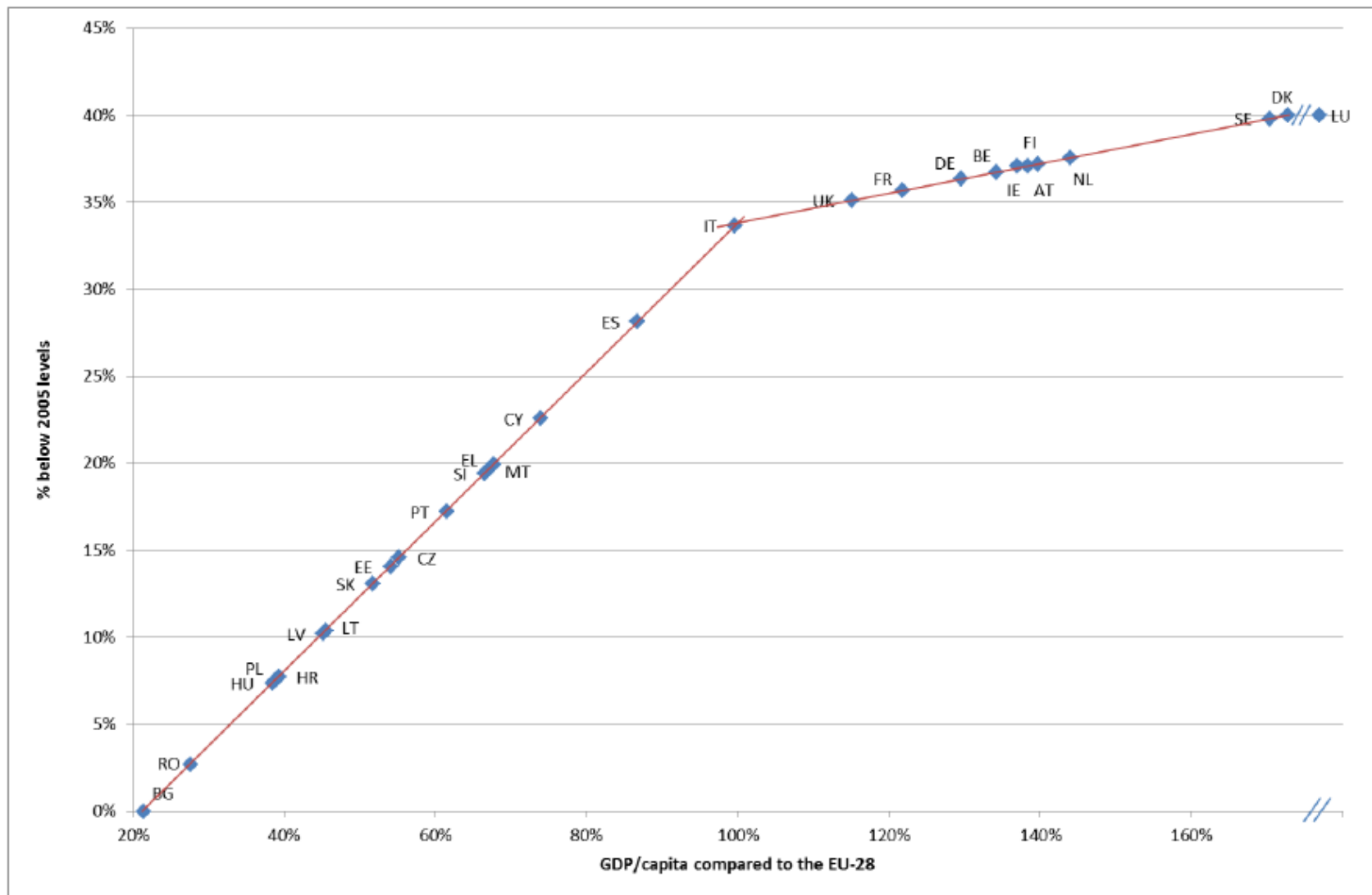
- the methodology to set the national reduction targets, with all the elements as applied in the Effort Sharing Decision for 2020, will be continued until 2030, with efforts distributed on the basis of relative GDP per capita;
- targets will span from 0% to -40% (vs. 2005);
- targets for Member States with a GDP/capita above the EU average will be relatively adjusted to reflect cost-effectiveness in a fair and balanced way.

Elements current effort-sharing

- Lowest GDP/capita = Bulgaria = 0%
- 2nd highest = Denmark = 40%
- Luxembourg twice as high as Denmark is out of range (and gets 40% too)
- Straight line between Bulgaria and Denmark
- Adjusted to reach -30%, mostly in the middle

Adjusted line from 0 to 40%

Figure 2: Member States' 2030 targets based on a GDP/capita distribution



Targets for “poorer” countries

| | 2014 | 2020 | 2030 | 2030-2020 | 2030-2014 |
|----------------|-----------|--------|------------|------------|------------|
| | emissions | target | -30 target | -30 target | -30 target |
| Bulgaria | 1.3 | 20.0 | 0.0 | -20 | -1.3 |
| Croatia | -14.3 | 11.0 | -7.7 | -18.7 | 6.6 |
| Cyprus | -36.5 | -5.0 | -22.6 | -17.6 | 13.9 |
| Czech Republic | -0.2 | 9.0 | -14.6 | -23.6 | -14.4 |
| Estonia | -5.2 | 11.0 | -14.1 | -25.1 | -8.9 |
| Greece | -28.2 | -4.0 | -19.9 | -15.9 | 8.3 |
| Hungary | -29.5 | 10.0 | -7.4 | -17.4 | 22.1 |
| Italy | -22.4 | -13.0 | -33.7 | -20.7 | -11.3 |
| Latvia | 2.4 | 17.0 | -10.2 | -27.2 | -12.6 |
| Lithuania | -6.7 | 15.0 | -10.4 | -25.4 | -3.7 |
| Malta | 0.0 | 5.0 | -19.6 | -24.6 | -19.6 |
| Poland | 7.5 | 14.0 | -7.7 | -21.7 | -15.2 |
| Portugal | -22.7 | 1.0 | -17.2 | -18.2 | 5.5 |
| Romania | -9.4 | 19.0 | -2.7 | -21.7 | 6.7 |
| Slovakia | -8.5 | 13.0 | -13.1 | -26.1 | -4.6 |
| Slovenia | -12.4 | 4.0 | -19.4 | -23.4 | -7.0 |
| Spain | -16.8 | -10.0 | -28.1 | -18.1 | -11.3 |

Targets for richer Member States

Potential likely from 2030 Impact Assessment (2014);

Two types of potential:

Full potential, based on existing policies (2012) and cost-efficient additional potential;

Additional potential only, based on 40€/ton.

Cost-effective Reduction Potential

Table 2: Cost-effective reduction potential in 2030 of Member States with above-average GDP/capita

| | Reference Scenario | Additional measures | | Full cost-effective potential | |
|----------------|--------------------|---------------------|------|-------------------------------|------|
| | | Min. | Max. | Min. | Max. |
| Austria | 19% | 8% | 13% | 27% | 32% |
| Belgium | 15% | 9% | 17% | 24% | 32% |
| Denmark | 20% | 11% | 13% | 31% | 33% |
| Finland | 21% | 9% | 12% | 30% | 33% |
| France | 23% | 11% | 15% | 34% | 38% |
| Germany | 33% | 8% | 14% | 41% | 47% |
| Ireland | 7% | 14% | 18% | 21% | 25% |
| Luxembourg | 16% | 4% | 11% | 20% | 27% |
| Netherlands | 20% | 8% | 12% | 28% | 32% |
| Sweden | 21% | 8% | 12% | 29% | 33% |
| United Kingdom | 25% | 10% | 14% | 35% | 39% |

Source: European Commission (2014)

Concerns

- Full use of full potential may lead to 'richer' countries having lower targets than Italy (which has GDP below average);
- Using full potential penalises countries that have already strong policies in place;
- Relatively adjusted means the weight of the potential parameter need to be well below 50%;

Adjusted with Additional/Full Reduction Potential

| | 2014 | 2020 | 2030 | 2030 | 2030 | 2030 |
|-------------|-----------|--------|------------|------------|------------|-------------|
| | emissions | target | -30 target | -30 target | -30 target | -30% target |
| | | | GDP | add pot | full pot | potential |
| | | | | min | min | difference |
| Austria | -17.2 | -16.0 | -37.6 | -36.2 | -33.2 | -3.0 |
| Belgium | -9.9 | -15.0 | -36.7 | -36.4 | -31.3 | -5.1 |
| Denmark | -15.0 | -20.0 | -40.0 | -40.0 | -34.0 | -6.0 |
| Finland | -8.0 | -16.0 | -37.1 | -36.7 | -33.5 | -3.2 |
| France | -16.3 | -14.0 | -35.7 | -37.3 | -35.1 | -2.2 |
| Germany | -9.7 | -14.0 | -36.3 | -35.0 | -38.0 | 3.0 |
| Ireland | -13.1 | -20.0 | -37.1 | -40.0 | -29.5 | -10.5 |
| Luxembourg | -9.8 | -20.0 | -40.0 | -34.8 | -29.9 | -4.9 |
| Netherlands | -23.1 | -16.0 | -37.2 | -35.8 | -33.1 | -2.7 |
| Sweden | -24.1 | -17.0 | -39.8 | -39.8 | -34.0 | -5.8 |
| UK | -16.3 | -16.0 | -35.1 | -35.7 | -35.4 | -0.3 |

Target for “Richer” countries

| | 2014 | 2020 | 2030 | 2030 | 2030-2020 | 2030-2014 |
|--------------------|-----------|--------|------------|--------------|------------|------------|
| | emissions | target | -30 target | -30 target | -30 target | -30 target |
| | | | GDP | add pot | add pot | add pot |
| | | | | min | min | min |
| Austria | -17.2 | -16.0 | -37.6 | -36.2 | -20.2 | -19.0 |
| Belgium | -9.9 | -15.0 | -36.7 | -36.4 | -21.4 | -26.5 |
| Denmark | -15.0 | -20.0 | -40.0 | -40.0 | -20 | -25.0 |
| Finland | -8.0 | -16.0 | -37.1 | -36.7 | -20.7 | -28.7 |
| France | -16.3 | -14.0 | -35.7 | -37.3 | -23.3 | -21.0 |
| Germany | -9.7 | -14.0 | -36.3 | -35.0 | -21 | -25.3 |
| Ireland | -13.1 | -20.0 | -37.1 | -40.0 | -20 | -26.9 |
| Luxembourg | -9.8 | -20.0 | -40.0 | -34.8 | -14.8 | -25.0 |
| Netherlands | -23.1 | -16.0 | -37.2 | -35.8 | -19.8 | -12.7 |
| Sweden | -24.1 | -17.0 | -39.8 | -39.8 | -22.8 | -15.7 |
| UK | -16.3 | -16.0 | -35.1 | -35.7 | -19.7 | -19.4 |

Ambitious targets for “poorer” countries

| | 2014 | 2020 | 2030 | 2030 | 2030-2020 | 2030-2014 |
|-----------------------|------------------|---------------|-------------------|-------------------|-------------------|-------------------|
| | emissions | target | -30 target | -46 target | -46 target | -46 target |
| Bulgaria | 1.3 | 20.0 | 0.0 | -16 | -36 | -17.3 |
| Croatia | -14.3 | 11.0 | -7.7 | -23.7 | -34.7 | -9.4 |
| Cyprus | -36.5 | -5.0 | -22.6 | -38.6 | -33.6 | -2.1 |
| Czech Republic | -0.2 | 9.0 | -14.6 | -30.6 | -39.6 | -30.4 |
| Estonia | -5.2 | 11.0 | -14.1 | -30.1 | -41.1 | -24.9 |
| Greece | -28.2 | -4.0 | -19.9 | -35.9 | -31.9 | -7.7 |
| Hungary | -29.5 | 10.0 | -7.4 | -23.4 | -33.4 | 6.1 |
| Italy | -22.4 | -13.0 | -33.7 | -49.7 | -36.7 | -27.3 |
| Latvia | 2.4 | 17.0 | -10.2 | -26.2 | -43.2 | -28.6 |
| Lithuania | -6.7 | 15.0 | -10.4 | -26.4 | -41.4 | -19.7 |
| Malta | 0.0 | 5.0 | -19.6 | -35.6 | -40.6 | -35.6 |
| Poland | 7.5 | 14.0 | -7.7 | -23.7 | -37.7 | -31.2 |
| Portugal | -22.7 | 1.0 | -17.2 | -33.2 | -34.2 | -10.5 |
| Romania | -9.4 | 19.0 | -2.7 | -18.7 | -37.7 | -9.3 |
| Slovakia | -8.5 | 13.0 | -13.1 | -29.1 | -42.1 | -20.6 |
| Slovenia | -12.4 | 4.0 | -19.4 | -35.4 | -39.4 | -23.0 |
| Spain | -16.8 | -10.0 | -28.1 | -44.1 | -34.1 | -27.3 |

Ambitious targets for “richer” countries

| | 2014 | 2020 | 2030 | 2030 | 2030-2020 | 2030-2014 |
|-------------|-----------|--------|------------|--------------|--------------|------------|
| | emissions | target | -30 target | -46 target | -46 target | -46 target |
| | | | add pot | add pot | add pot | add pot |
| Austria | -17.2 | -16.0 | -36.2 | -52.2 | -36.2 | -35.0 |
| Belgium | -9.9 | -15.0 | -36.4 | -52.4 | -37.4 | -42.5 |
| Denmark | -15.0 | -20.0 | -40.0 | -56 | -36 | -41.0 |
| Finland | -8.0 | -16.0 | -36.7 | -52.7 | -36.7 | -44.7 |
| France | -16.3 | -14.0 | -37.3 | -53.3 | -39.3 | -37.0 |
| Germany | -9.7 | -14.0 | -35.0 | -51 | -37 | -41.3 |
| Ireland | -13.1 | -20.0 | -40.0 | -56 | -36 | -42.9 |
| Luxembourg | -9.8 | -20.0 | -34.8 | -50.8 | -30.8 | -41.0 |
| Netherlands | -23.1 | -16.0 | -35.8 | -51.8 | -35.8 | -28.7 |
| Sweden | -24.1 | -17.0 | -39.8 | -55.8 | -38.8 | -31.7 |
| UK | -16.3 | -16.0 | -35.7 | -51.7 | -35.7 | -35.4 |



CAN

CLIMATE ACTION NETWORK

Europe